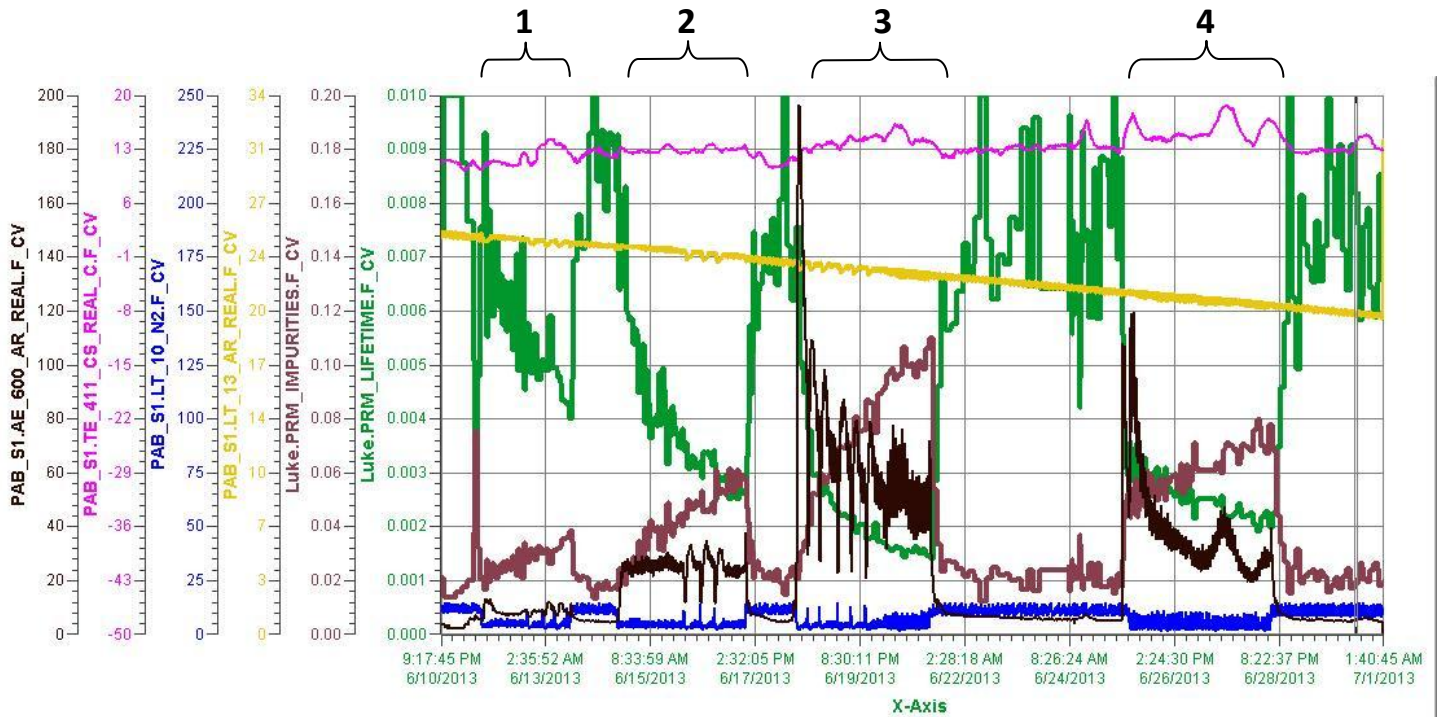


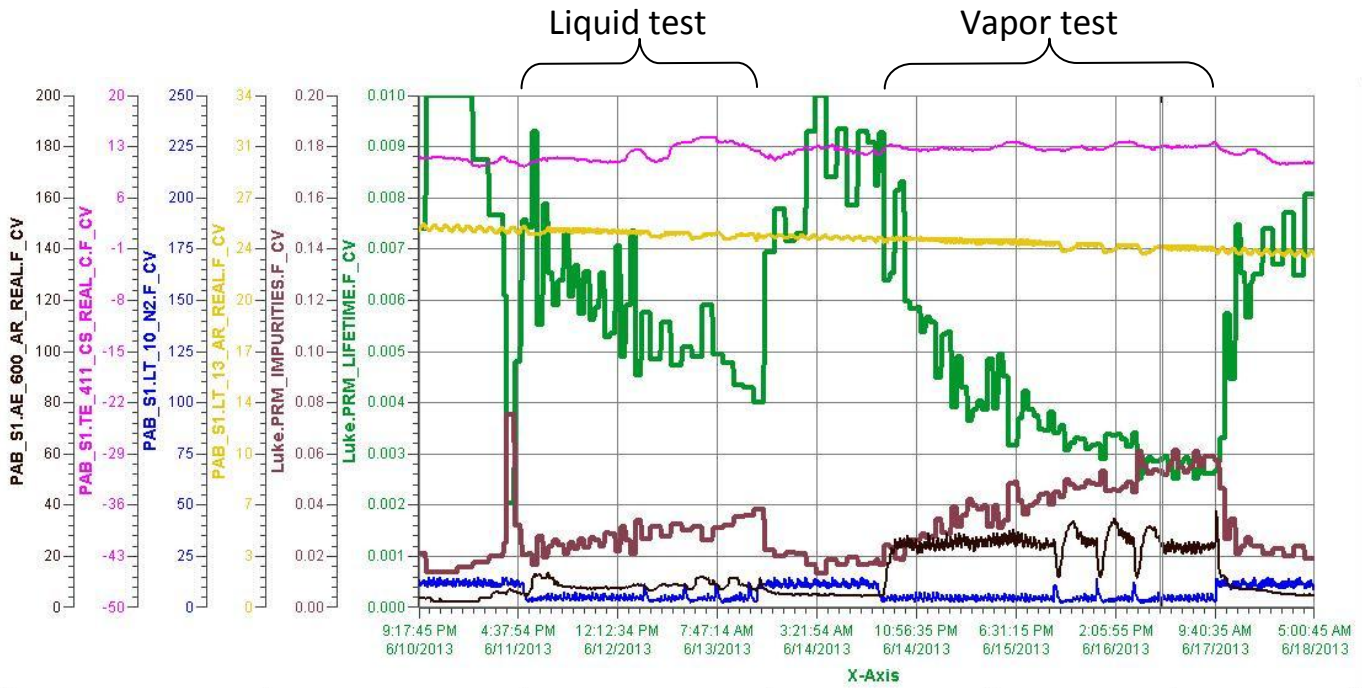
Acrylic/Bis-MSB Test 6/11/2013 – 6/28/2013

1. Liquid Test.
2. Vapor Test.
3. Room Temperature Test
4. Zero Test



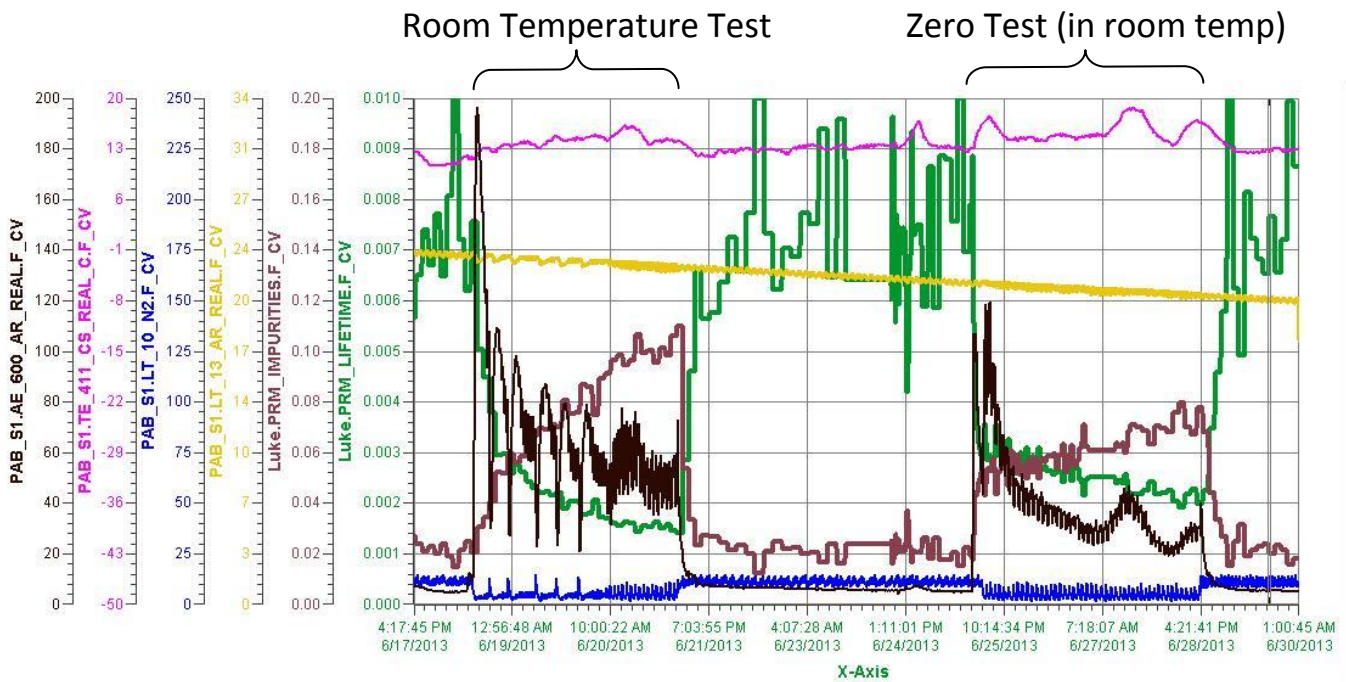
| Pen Name | Description | Value | Eng Units | High Over Range | Low Over Range |
|--------------------------------|---------------------------------------|---------|-----------|-----------------|----------------|
| — Luke.PRM_LIFETIME_F_CV | Luke.PRM_LIFETIME_F_CV | 0.00814 | sec | 0.01277 | 0.00137 |
| — Luke.PRM_IMPURITIES_F_CV | Luke.PRM_IMPURITIES_F_CV | 0.0184 | Imps | 0.1093 | 0.0117 |
| — PAB_S1_LT_13_AR_REAL_F_CV | Luke Argon Level Probe | 20.2 | inches | 31.2 | 19.9 |
| — PAB_S1_LT_10_N2_F_CV | Luke Condenser LN2 Level Probe (F_CV) | 12.1 | inches | 14.5 | 1.2 |
| — PAB_S1_TE_411_CS_REAL_C_F_CV | TC on Luke top flange (F_CV) | 13.7 | C | 18.7 | 10.2 |
| — PAB_S1_AE_600_AR_REAL_F_CV | Luke Halo (F_CV) | 4.8 | ppb | 196.4 | -1.8 |

6/10/2013 9:17:45 PM 7/1/2013 1:40:45 AM



| Pen Name | Description | Value | Eng Units | High Over Range | Low Over Range |
|-----------------------------|---------------------------------------|---------|-----------|-----------------|----------------|
| Luke.PRM_LIFETIME.F_CV | Luke.PRM_LIFETIME.F_CV | 0.00285 | sec | 0.01181 | 0.00201 |
| Luke.PRM_IMPURITIES.F_CV | Luke.PRM_IMPURITIES.F_CV | 0.0527 | Imps | 0.0745 | 0.0127 |
| PAB_S1.LT_13.AR.REAL.F_CV | Luke Argon Level Probe | 24.0 | inches | 25.4 | 23.3 |
| PAB_S1.LT_10.N2.F_CV | Luke Condenser LN2 Level Probe (F_CV) | 4.1 | inches | 14.5 | 1.5 |
| PAB_S1.TE_411.CS.REAL.CF_CV | TC on Luke top flange (F_CV) | 12.8 | C | 14.4 | 10.2 |
| PAB_S1.AE_600.AR.REAL.F_CV | Luke Halo (F_CV) | 23.2 | ppb | 37.3 | 1.8 |

6/10/2013 9:17:45 PM 6/18/2013 5:00:45 AM



| Pen Name | Description | Value | Eng Units | High Over Range | Low Over Range |
|-----------------------------|---------------------------------------|---------|-----------|-----------------|----------------|
| Luke.PRM_LIFETIME.F_CV | Luke.PRM_LIFETIME.F_CV | 0.00683 | sec | 0.01277 | 0.00137 |
| Luke.PRM_IMPURITIES.F_CV | Luke.PRM_IMPURITIES.F_CV | 0.0221 | Imps | 0.1093 | 0.0117 |
| PAB_S1.LT_13.AR.REAL.F_CV | Luke Argon Level Probe | 20.3 | inches | 23.7 | 17.7 |
| PAB_S1.LT_10.N2.F_CV | Luke Condenser LN2 Level Probe (F_CV) | 11.4 | inches | 14.5 | 1.2 |
| PAB_S1.TE_411.CS.REAL.CF_CV | TC on Luke top flange (F_CV) | 12.9 | C | 18.6 | 10.6 |
| PAB_S1.AE_600.AR.REAL.F_CV | Luke Halo (F_CV) | 4.9 | ppb | 196.4 | 3.2 |

6/17/2013 4:17:45 PM 6/30/2013 1:00:45 AM