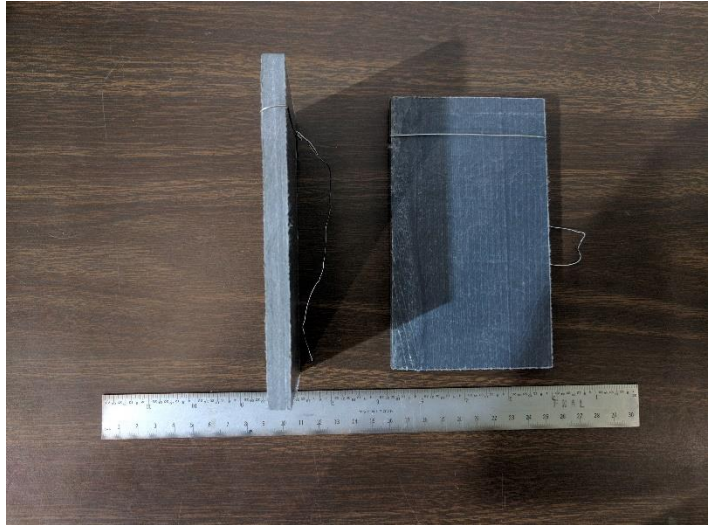
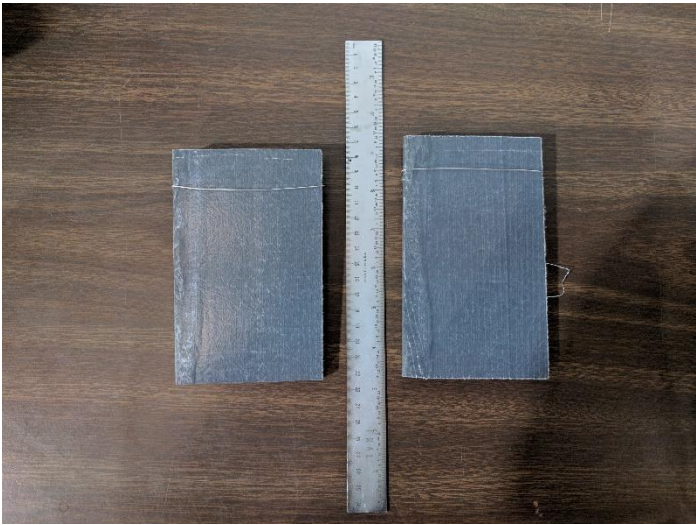
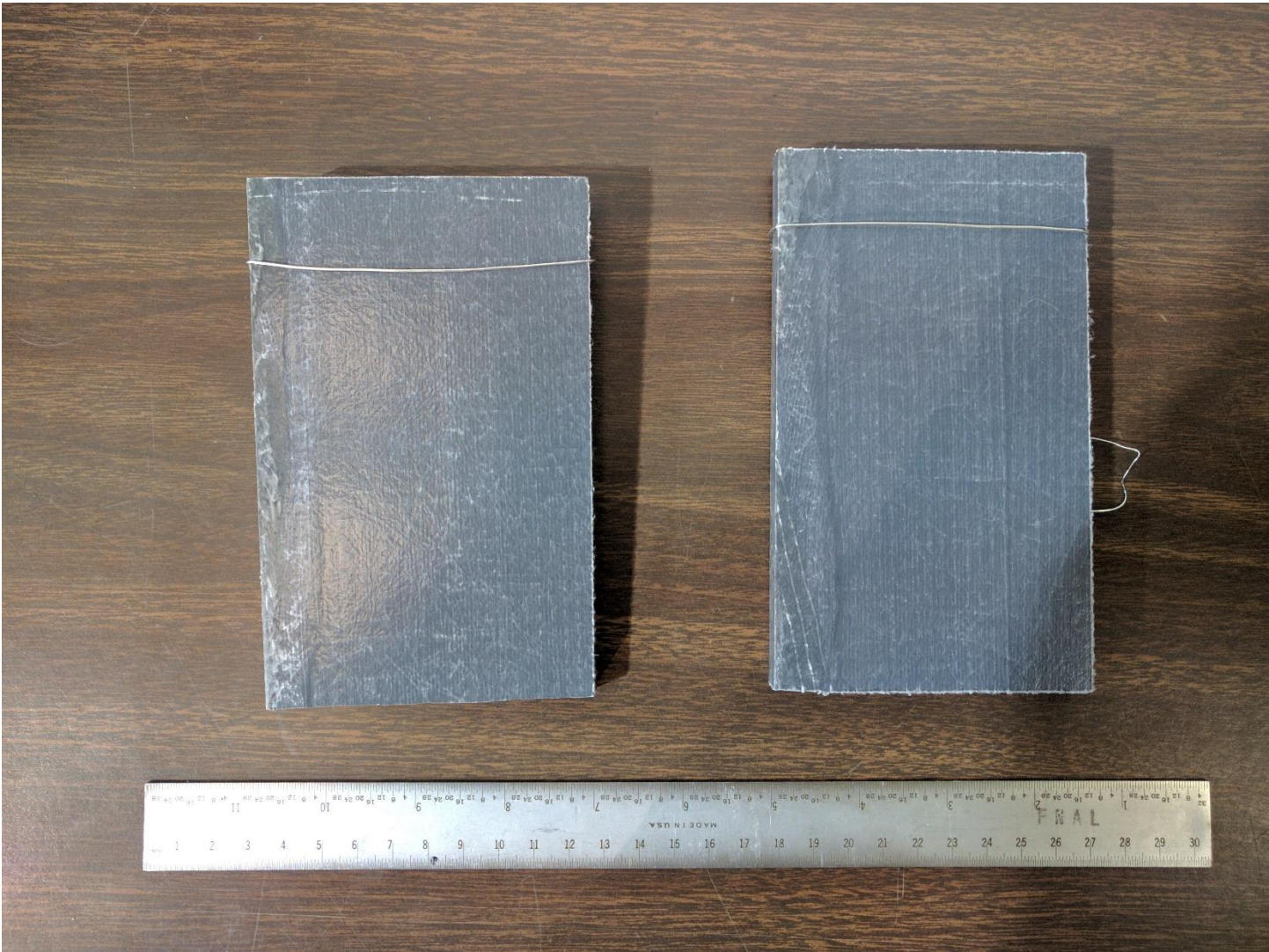
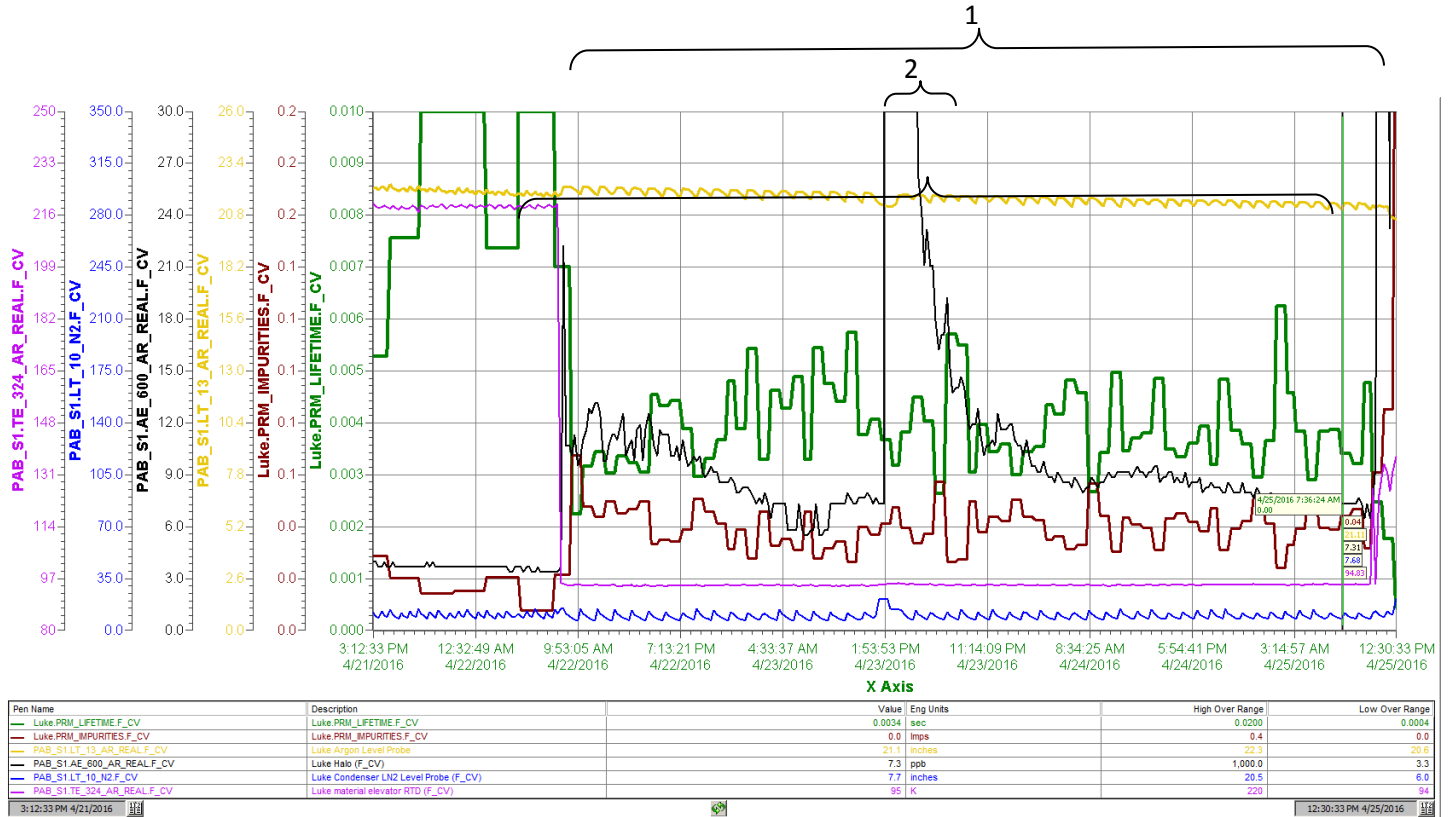


DUNE Fiber glass (field cage support) 4/21/2016 – 4/25/2016

<i>PAB Materials Test System</i>	
Date of Receipt	4/25/15 , logbook entry # 5224
Sample Name/Description	Fiber glass
	Dune field cage support
Sample	
Composition:	Fiber glass
Picture Location:	data base
Weight:	453.3 g
Dimensions/Area:	2 plates: length approx. 15 cm, width 9 cm
Source:	Yu Bo
Preparation:	dry clean
Submerging in LAr or LH2	x
Time in the airlock(hrs)	
Vacuum:	
Purge	22 hours with gas Argon from Luke
Liquid Test	
Start Time/Date, End Time/Date :	4/22/2016 8:30 AM , 4/25/2016 8:30 AM
PrM run # :	27595
Condenser state:	on
Filter state/settings:	off
H2O reading:	7 ppb
Temperature:	95 K
Liquid Level	21.4 inches
Lifetime:	4 ms



1. Liquid Test
2. The water peak observed at 4/23/2016 1:53 pm is due to a switch valve on the water measurer input. In fact, we do not observe a lifetime decreasing in correspondence of peak. The water content increasing is from 3 ppb to 7 ppb.



Lifetime – green pen

Impurities – brown pen

Liquid level – yellow pen

Water – black pen

Temperature – magenta pen