

Fiberglass Reinforced Polyurethane Foam (RPUF)

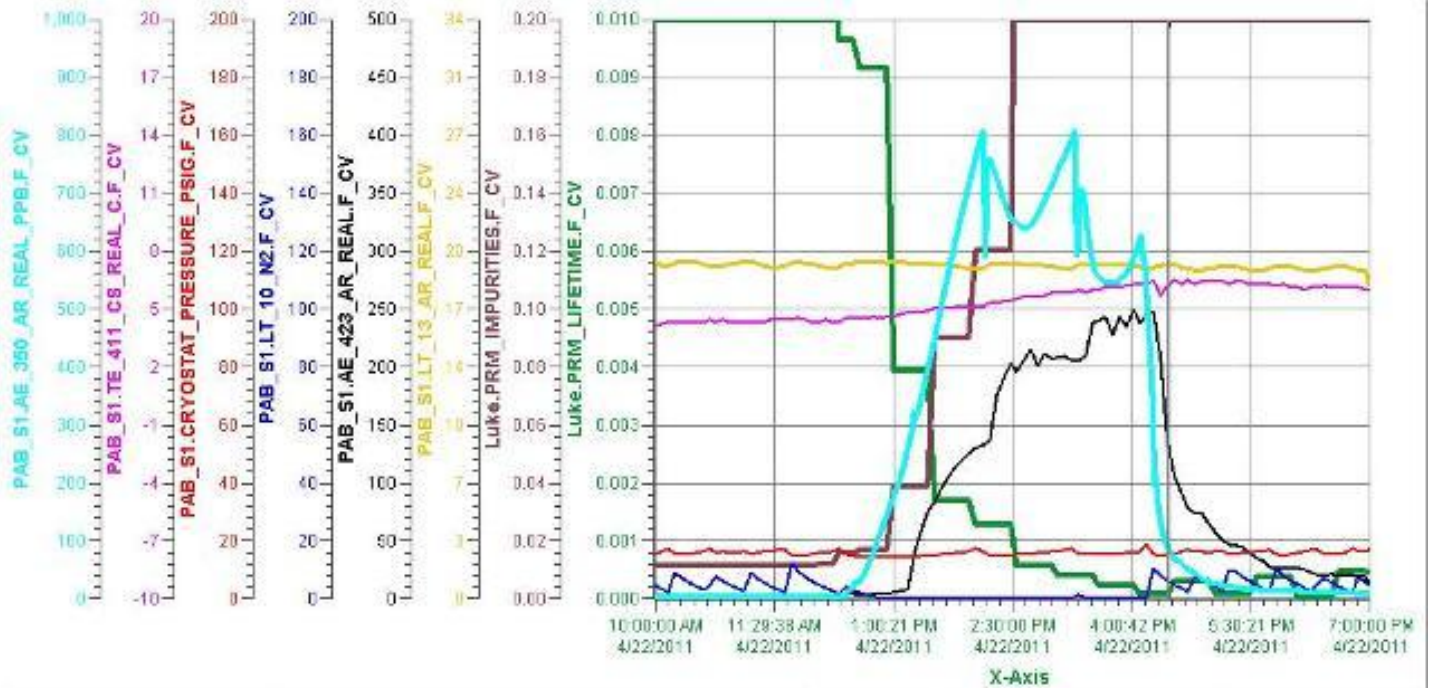
4/22/2011

PAB Materials Test System

Date of Receipt	5/2/11 , logbook entry # 1729
Sample Name/Description	fiberglass reinforced polyurethane foam (RPUF) insulation bonded with epoxy to plywood
Sample	
Composition:	polyurethane, glass, plywood
Density	120-130 kg/m ³ .
Picture Location:	data base
Weight:	110 g
Dimensions/Area:	16 cm x 8.5 cm x 3.5 cm
Source:	Russ Rucinski
Preparation:	Russ pumped on a piece of the foam in a bell jar, and pressure cycled it several times.
Time in the airlock(hrs)	27 h
Purge:	evacuated with rough pump for 26 h, purged from Luke for 1 hour
Vacuum:	
Room Temperature	
Start Time/Date, End Time/Date :	4/22/2011 12:20 pm, 4/22/2011 4:00 pm
PrM run # :	12427
Condenser state:	on
Filter state:	off
O2 reading:	increased by 800 ppb in 1.5 h, was 500 ppb after 3.5 h
H2O reading:	250 ppb
Lifetime:	from >10 ms to 0.2 ms in 3 h
Vapor Test	x
Start Time/Date, End Time/Date :	not performed.
Results/comments	electron lifetime deteriorated very fast.

Room temperature test.

(green line is electron lifetime, black line is water, turquoise line is oxygen)



Pen Name	Description	Value	Eng Units	High Over Range	Low Over Range
— Luke.PRM_LIFETIME.F_CV	Luke.PRM_LIFETIME.F_CV	0.00011	sec	0.01388	0.00001
— Luke.PRM_IMPURITIES.F_CV	Luke.PRM_IMPURITIES.F_CV	1.9398	ppm	17.9000	0.0108
— PAB_S1_LT_13_AR_REAL...	Luke Argon Level Probe	19.6	inches	19.0	10.0
— PAB_S1_AE_423_AR_REAL...	HALO H2O meter (F_CV)	127.6	ppb	249.5	2.3
— PAB_S1_LT_10_N2.F_CV	Luke Condenser LN2 Level Pro...	5.6	inches	11.9	-0.0
— PAB_S1_CRYOSTAT_PRE...	Luke Vapor Pressure	14.8	psig	18.6	13.9
— PAB_S1_TE_411_CS_REA...	TC on Luke top flange (F_CV)	6.3	C	6.5	4.1
— PAB_S1_AE_350_AR_REA...	ppb version for alcting (F_CV)	85	ppb	805	2

4/22/2011 10:00:00 AM 4/22/2011 7:00:00 PM

Fiberglass Reinforced Polyurethane Foam (RPUF)



RPUF wrapped in aluminum foil with the opening on the right



RPUF in the airlock (wrapped in aluminum foil with the opening on the top)

