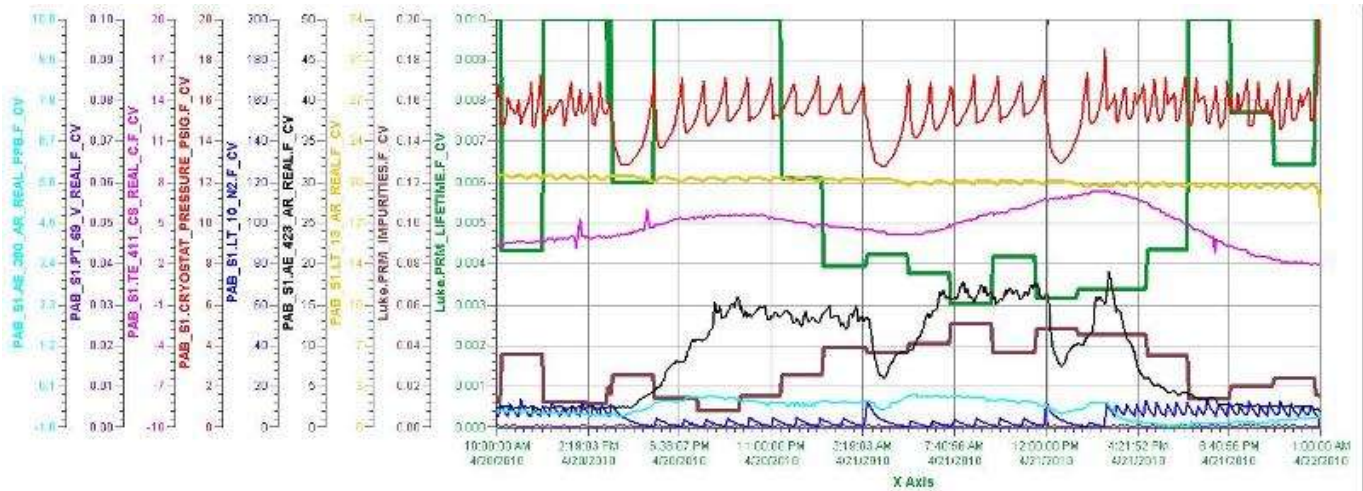


PAB Materials Test System

Date of Receipt	5/4/10, elog # 1250
Sample Name/Description	Rigaku ferrofluidic feedthrough
Sample	
Composition:	Stainless steel
Picture Location:	Data Base
Weight:	199.4 g
Dimensions/Area:	total length is 80 mm, housing L=41.9 mm, dia 39.6 and 25.2 shaft dia 9.5 mm
Source:	Walter Jaskierny, Hans Jostlein
Preparation:	Cleaned with alcohol
Submerging in LAr or LH2	no
Zero Test	x
Time in the airlock(hrs)	7.5 h
Purge:	4/20/10, 7.5 h
Vacuum:	
Room Temperature	
Start Time/Date, End Time/Date :	4/20/10 3:22 pm, 4/21 2:42 pm
PrM run # :	8188
Condenser state:	on
Filter state:	off
O2 reading:	increased by 0.4 ppb
H2O reading:	2.3 ppb to 15 ppb
Temperature:	room
Lifetime:	7-10 ms to 3.1 ms
Vapor Test	x
Liquid Test	x

Room Temperature Test Historical Data



Pen Name	Description	Value	Eng Units	High Over Range	Low Over Range
LUKE_PPM_LIFETIME_F_CV	LUKE_PPM_LIFETIME_F_CV	0.00314	sec	0.01818	0.00288
LUKE_PPM_IMPURITIES_F_CV	LUKE_PPM_IMPURITIES_F_CV	0.0478	ppb	0.0501	0.0078
PAB_S1_LT_13_AR_REAL_F_CV	LUKE AIGES Level F1000	20.0	inches	21.1	18.8
PAB_S1_AE_423_AR_REAL_F_CV	HALO H2O meter (F_CV)	16.1	ppb	15.0	1.8
PAB_S1_LT_10_N2_F_CV	LUKE Condenser LH2 Low Probe (F_CV)	10.8	inches	13.5	-9.2
PAB_S1_CRYOSTAT_PRESSURE_PBIG_F_CV	LUKE Vapor Pressure	14.5	psig	27.3	12.7
PAB_S1_TE_411_CS_REAL_C_F_CV	TC on Luke top flange (F_CV)	8.8	C	7.3	1.9
PAB_S1_PT_69_V_REAL_F_CV	Seal Monitor Vacuum	0.0091	Torr	0.0097	0.0001
PAB_S1_AE_360_AR_REAL_PPB_F_CV	ppb sensor for pinning (F_CV)	-0.5	ppb	-0.1	-1.0

