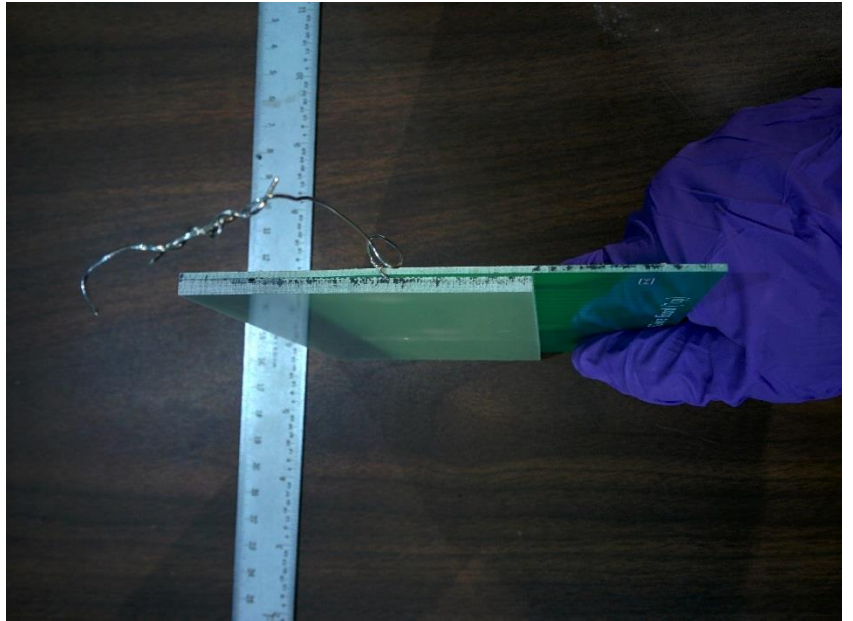
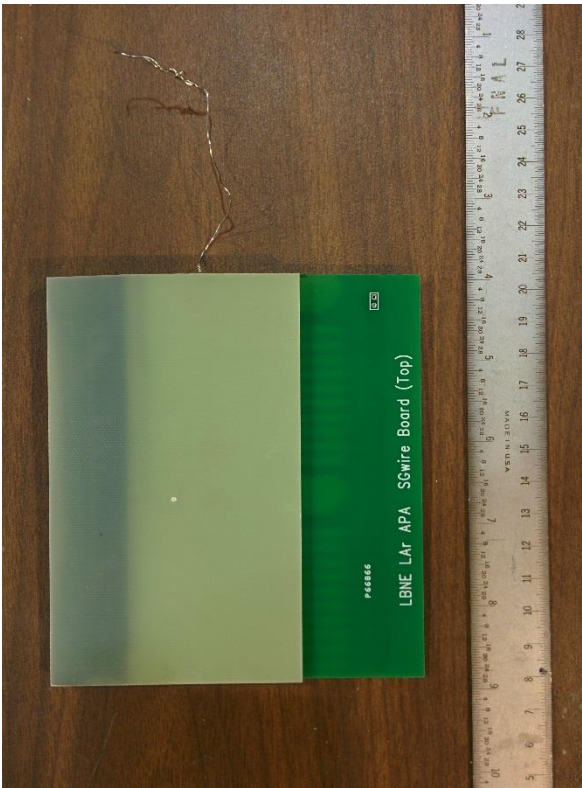


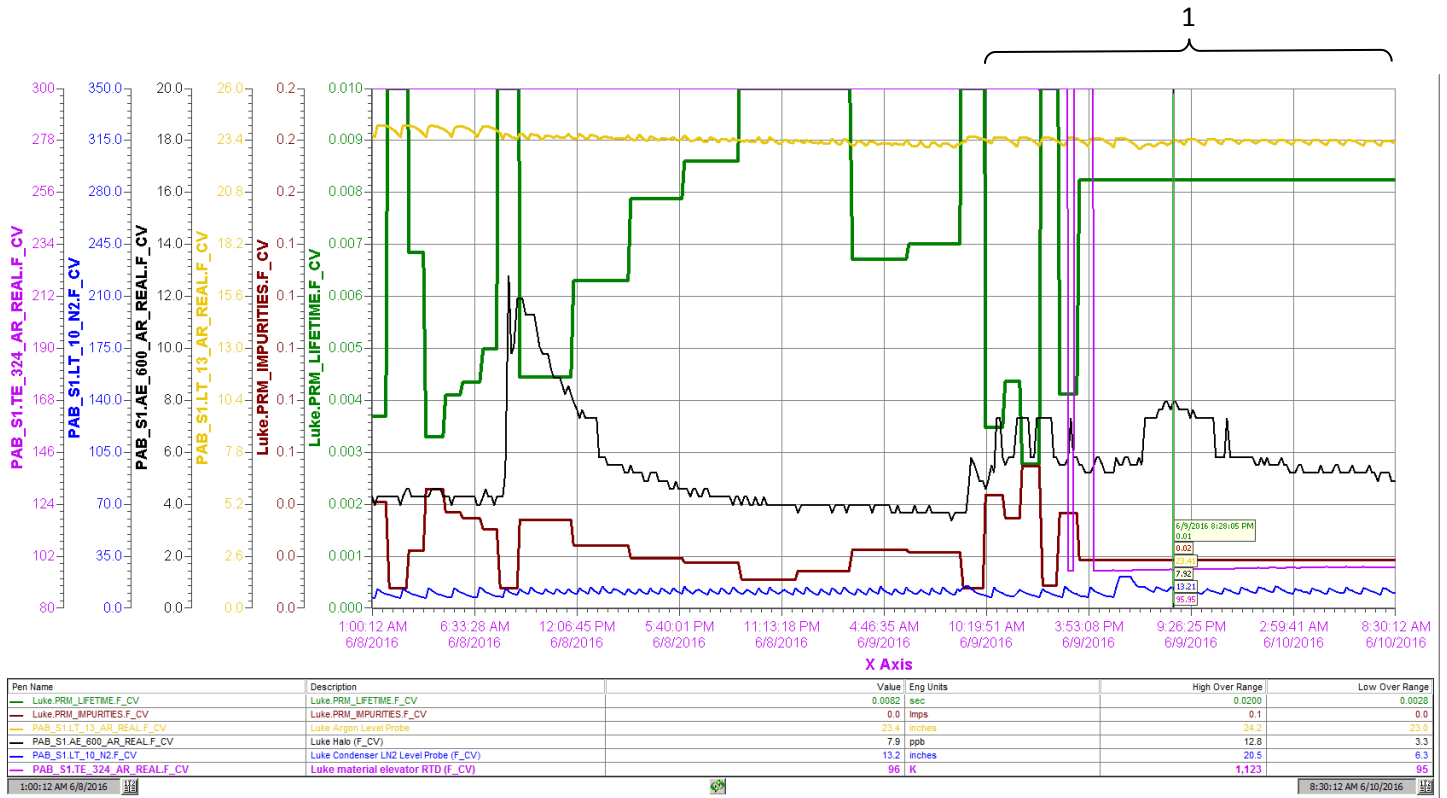
Rosin Flux Residue, Epoxy Encapsulation (PSL_006)

9/Jun/2016 – 10/Jun/2016

<i>PAB Materials Test System</i>	
Date of Receipt	14/JUN/16 , logbook entry # 5262
Sample Name/Description	Rosin Flux Residue, Epoxy Encapsulation
	PSL_006
Sample	
Composition:	Electronic board
Picture Location:	data base
Weight:	104 g
Dimensions/Area:	length approx. 115 cm, width 125 cm
Source:	Jonathan Heise, University of Wisconsin-Madison
Preparation:	dry clean
Submerging in LAr or LH2	x
Time in the airlock(hrs)	
Vacuum:	
Purge	22 hours with gas Argon from Luke
Liquid Test	
Start Time/Date, End Time/Date :	9/JUN/2016 8:50 AM, 10/JUN/2016 8:00 AM
PrM run # :	28145
Condenser state:	on
Filter state/settings:	off
H2O reading:	increased from 3.2 to 5.4 ppb
Temperature:	95 K
Liquid Level	23.3 inches
Lifetime:	4 ms



1. Liquid Test



Lifetime – green pen

Impurities – brown pen

Liquid level – yellow pen

Water – black pen

Temperature – magenta pen